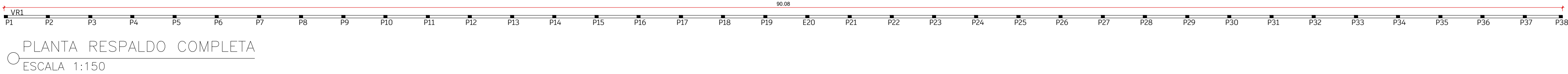
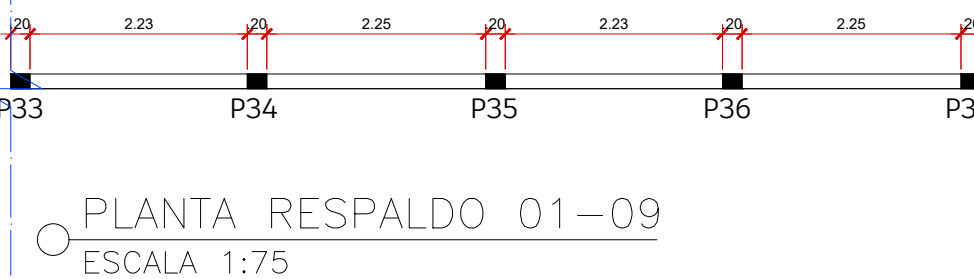
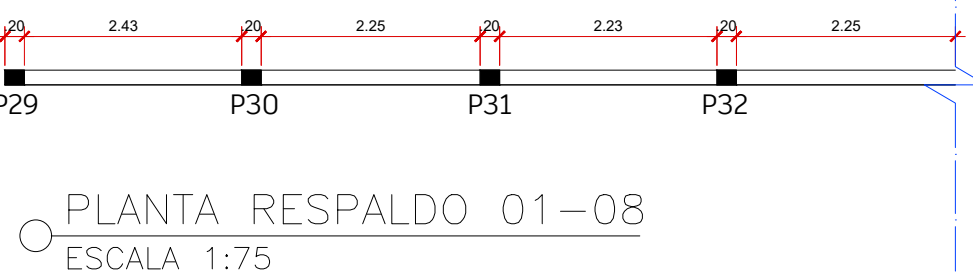
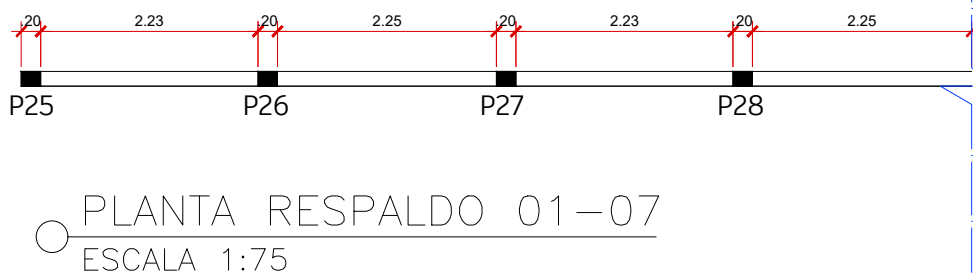
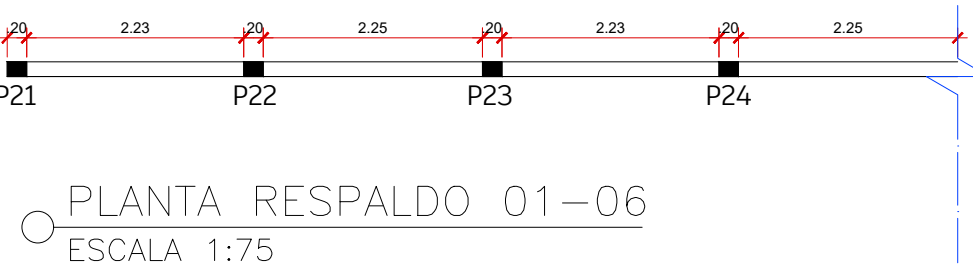
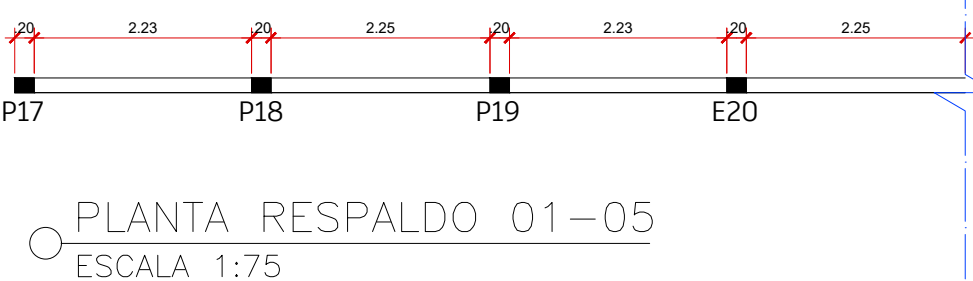
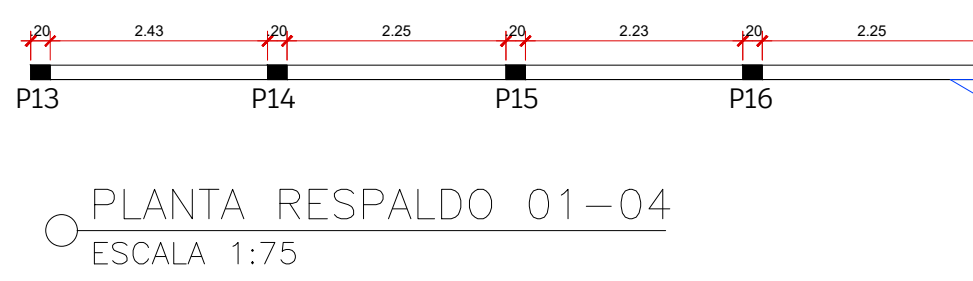
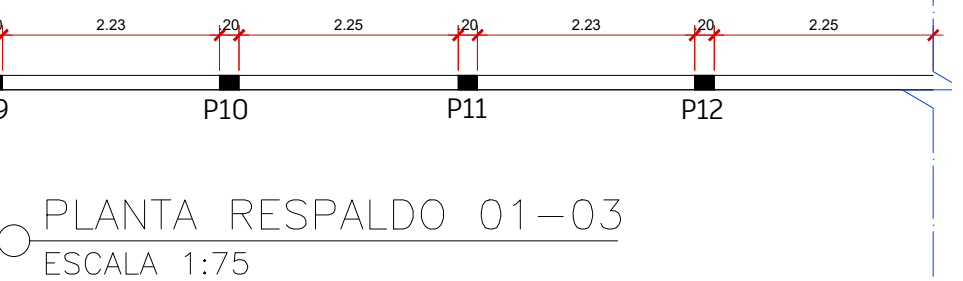
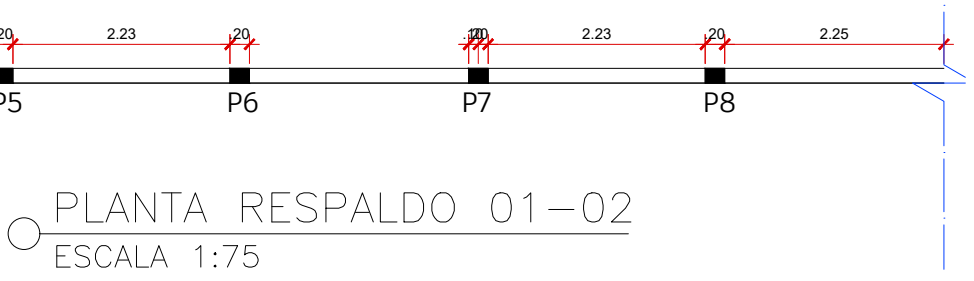
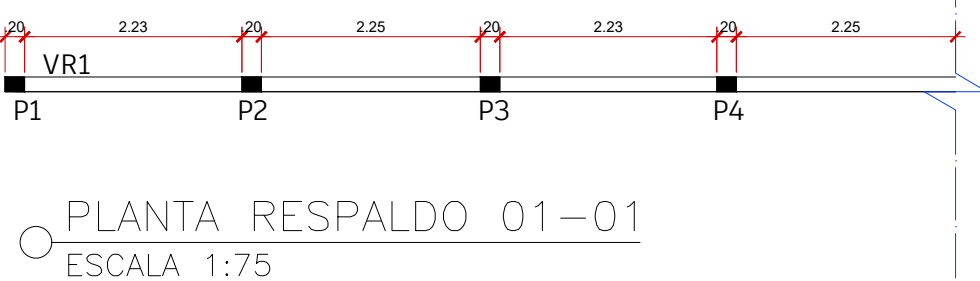
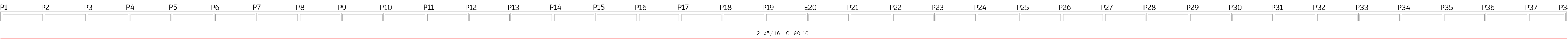
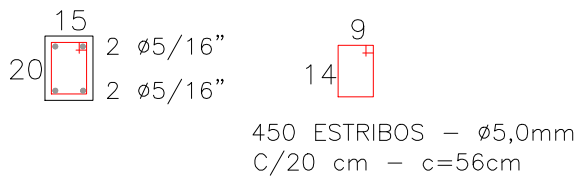


VR1 (15x20)

Corte Transversal  
s/escala

Estribos



## Resumo de formas

TIPO	QUANT. (unit.)	COMP. (m)	ÁREA (m2)
V. BALDRAME			
V. INTERMEDIÁRIA			
PILARES			
MÃO FRANCESA			
TOTAL M2			66,64

Formas de madeira reap. 2x - Tábua de madeira 30 cm x 250cm

## Relação do aço

ELEMENTO	AÇO	N	DIAM (mm)	QUANT (Barras)	COMP (ml)	KG
ESTACAS	CA50	1	5.0			99,61
	CA60	2	10.0			362,80
PILARES	CA50	1	5.0			63,82
	CA60	2	10.0			255,68
V. BALDRAME	CA50	1	5.0			110,88
	CA60	2	10.0			444,24
VIGA INTERMEDIÁRIA	CA50	1	5.0			17,56
	CA60	2	10.0			70,34
MÃO FRANCESA	CA50	1	5.0			17,56
	CA60	2	8.0			45,03

## Resumo do concreto

TIPO	QUANT. (unit.)	COMP. (m)	VOL. (m³)
VIGA BALDRAME			5,40
VIGA INTERMEDIÁRIA			1,67
PILARES			3,11
MÃO FRANCESA			1,67
TOTAL (m3)			11,85

## Resumo Geral do Aço

ELEMENTO	AÇO	DIAM (mm)	PESO (kg)
ESTACAS	CA50	5.0	99,61
	CA60	10.0	362,80
PILARES	CA50	5.0	63,82
	CA60	10.0	255,68
V. BALDRAME	CA50	5.0	110,88
	CA60	10.0	444,24
VIGA INTERMEDIÁRIA	CA50	5.0	17,56
	CA60	10.0	70,34
MÃO FRANCESA	CA50	5.0	17,56
	CA60	8.0	45,03

PESO TOTAL (kg)  
CA50 309,43  
CA60 1178,09

Peso da ferragem p/cálculo  
10 mm - 0,617 kg/m  
8 mm - 0,395 kg/m  
5 mm - 0,154 kg/m

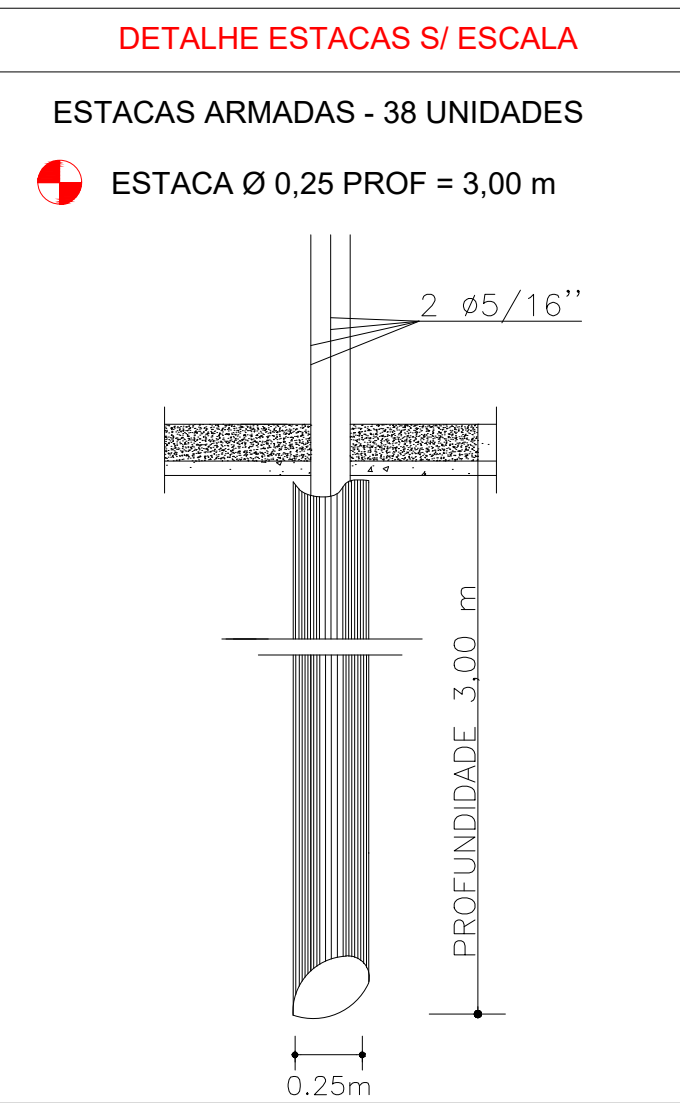
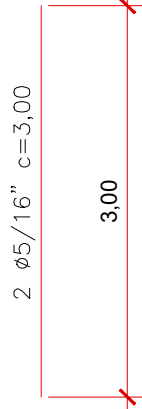
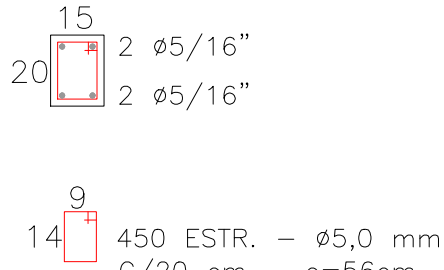
Considerar um total de 10% de perca sobre o total do material

## DETALHE: ARMADURA DOS PILARES

PILARES: P1 AO P38.

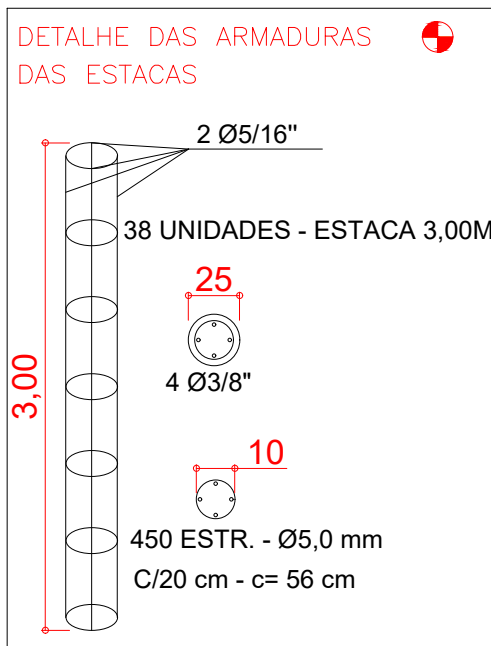
P= 38\*2,00M= 76,00 M

P= 15x20



## LEGENDA

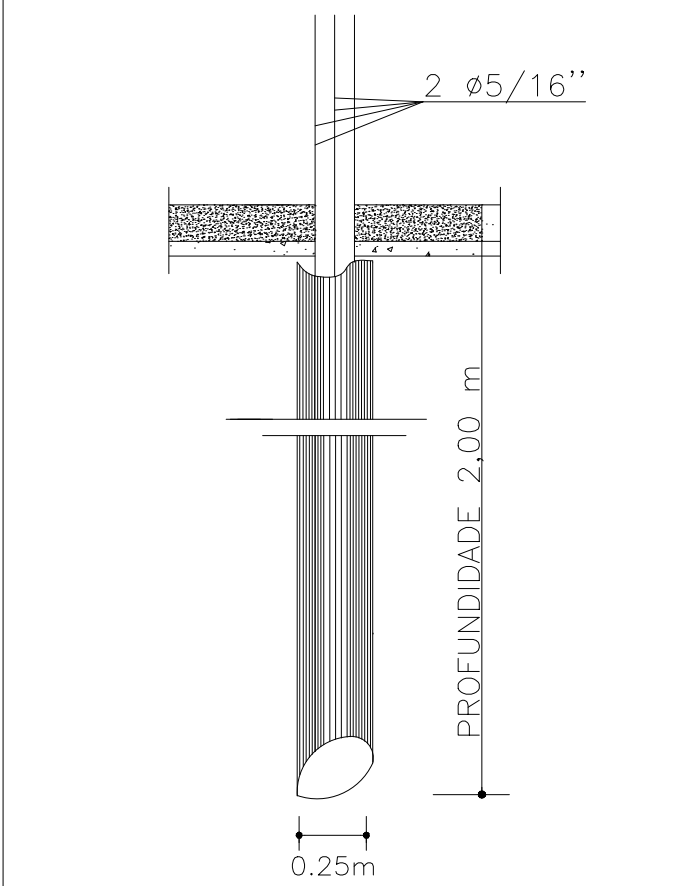
38 ESTACAS COM PROFUNDIDADE DE 3,00M



## DETALHE ESTACAS S/ ESCALA

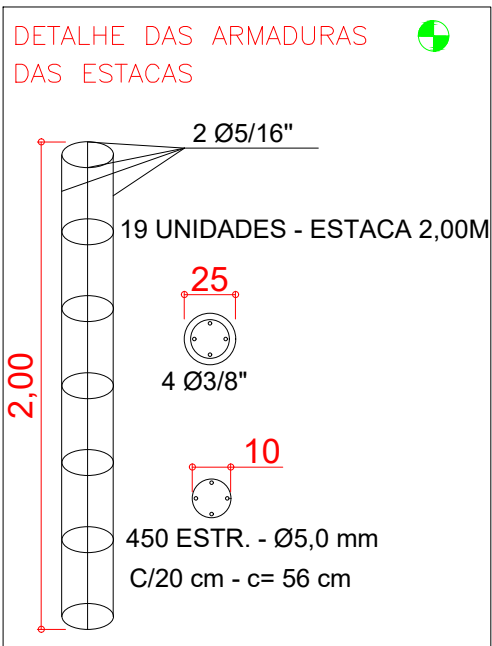
ESTACAS ARMADAS - 19 UNIDADES

ESTACA Ø 0,25 PROF = 2,00 m



## LEGENDA

19 ESTACAS COM PROFUNDIDADE DE 2,00M



MUNICÍPIO DE TERRA RICA - PARANÁ

SECRETARIA MUNICIPAL DE ADMINISTRAÇÃO

DIVISÃO DE ENGENHARIA E PLANEJAMENTO

Avenida Euclides da Cunha, 1120 - 87890-000 Terra Rica - PR

projeto@terranca.pr.gov.br - 44 3441-8541

PROJETO ESTRUTURAL

Folha 02 Qtd.Fol. 02

REFORMA MURO DA CRECHE JOÃO MARCOS

Proprietário: PREFEITURA MUNICIPAL DE TERRA RICA

Cadastrado: 12-A1-UR

Endereço: AVENIDA ERCÍLIA MARTINS DAMIANI

Bairro/Gleba/Loteamento: VILA BARBOSA

Observações:

TERRENO

6.030,00 m2

ÁREA REFORMADA

270,00 m2

TOTAL

270,00 m2

Situação Esquemática:

Responsável Técnico pelo Projeto:

CREA/CAU:

Layane Cristine Gouveia Crepaldi

CREA: PR178553/D

Autenticação da Prefeitura Municipal de Terra Rica (PR)

Observações: